

Outdoor Mobile Lighting Tower

*Manufactured to be durable,
flame-retardant,
360° glare-free,
shadow-less lighting,
eliminate blind spots,
fast & easy setup.*

2000w Halogen Series



1000w HTI Series



2000w HTI Series



Mobile Lighting Tower 1000w HTI

BALLOON :

- Dimension : 1075mm diameter & 600mm height
- Material : Rip-stop nylon with polyurethane coating
- Non flammable & UV-resistant envelope material
- Elliptical shape offers strong wind resistance of up 100 km per hour / 62.5 miles per hour
- Built in high heat resistance reflector for optimal light output
- Inflated by a blower with internal pressure of 3 mbar / 300 pa
- Built in pressure sensor to withstand strong falls or impact
- Continuous circulating air maintains envelope inflated and keep the lamps cool
- Auto power cut off switch to prevent eye damage if internal pressure is reduced

TILTING HEAD DEVICE :

- Dimension : 100mm diameter & 110mm width
- Material : POM-C
- ASTM Test : Hardness (Rockwell) – R116
- ASTM Test (D256) : Impact Strength (Izod notched) – 6.1kg/cm2
- ASTM Test (D638) : Tensile strength – 685 kg/cm2, Elongation (At yield) – 40%, Tensile modulus – 31900 kg/cm2,
- ASTM Test (D648) : Deflection temperature (18.5kg/cm2) – 106 degrees celisius
- ASTM Test (D695) : Compressive strength (10% deformation) – 885 kg/cm2
- For tilting the envelope up to 90 degrees for directional lighting
- Can fit various pole sizes

POLE / BASE STAND :

- Dimension : 40 mm diameter & 1.4 meters height
- Material : Epoxy coated steel & aluminium for resistance of rust, corrosion & oxidation
- Adjustable height of up to 4.1 meters for wider lighting coverage
- Strong & wide expandable base of 1.72 meters for stability

BAG FOR STAND :

- Dimension : 1435mm length X 215mm width & 185mm height
- Material : Italiano leather sling on bag for easy carry
- Stand weight with bag is 8 kilogram

CONTAINER FOR LAMP :

- Dimension : 275mm diameter & 900mm height
- Material : Plastic container wrapped with Italiano leather & chrome steel handle
- Balloon weight with container is 6 kilogram

CONTAINER FOR BALLAST :

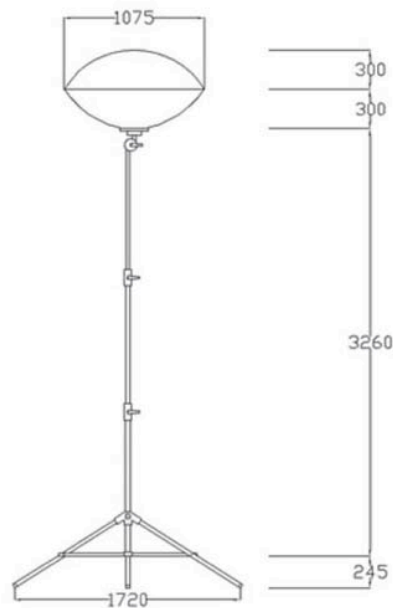
- Dimension : 200mm length X 300mm width X 250mm height
- Material : High pressure die cast aluminium housing & chrome steel handle
- Ballast weight with container is 15 kilogram

SETUP :

- Quick setup for emergency response (Max. of 3 minutes setup for 1 person)
- Balloon inflates in 45 seconds

ELECTRICAL DATA (230V) :

- Lamp type – Metal halide tubular lamp with E40 cap
- Lamp dimension – 80 mm diameter X 340 mm length
- Lamp power – 1 no of 1000 watt
- Average Lamp lifespan – 8000 hours
- Lamp maximum temperature – 400 degrees Celsius
- Power supply protection – 10 amp fuse
- IEC standards requirement: – IEC 922 & IEC 923 for ballast IEC 926 & IEC 927 for ignitors
- Power cable – 3G1.5



TRANSPORT :

- Easy transport with equipment easily fitted in the car

LIGHTING DATA :

- Lighting coverage area at 4 meters height - 1760 square meter
- Lighting area at 4 meter height with minimum 10 lux – 520 square meter
- Lighting below 4 meter / 4 meter – 340 lux
- Efficiency – 80 lumens per watt
- Maximum lumens – 80000 lumens
- Temperature color – 6000 k
- Run-up time – 4 minutes
- Restrike time – 7 minutes
- Ignitor voltage – 4 to 5 kv
- PFC capacitor – 80 uF



Mobile Lighting Tower 2000w Halogen

BALLOON :

- Dimension : 1075mm diameter & 600mm height
- Material : Rip-stop nylon with polyurethane coating
- Non flammable & UV-resistant envelope material
- Elliptical shape offers strong wind resistance of up 100 km per hour / 62.5 miles per hour
- Built in high heat resistance reflector for optimal light output
- Inflated by a blower with internal pressure of 3 mbar / 300 pa
- Built in pressure sensor to withstand strong falls or impact
- Continuous circulating air maintains envelope inflated and keep the lamps cool
- Auto power cut off switch to prevent eye damage if internal pressure is reduced
- Glare free light for less eye strain and no blind spots
- Shadow free light for safer working environment

TILTING HEAD DEVICE :

- Dimension : 100mm diameter & 110mm width
- Material : POM-C
- ASTM Test : Hardness (Rockwell) – R116
- ASTM Test (D256) : Impact Strength(Izod notched) – 6.1 kg/cm²
- ASTM Test (D638) : Tensile strength – 685 kg/cm², Elongation (At yield) – 40%, Tensile modulus – 31900 kg/cm²,
- ASTM Test (D648) : Deflection temperature (18.5kg/cm²) – 106 degrees celisius
- ASTM Test (D695) : Compressive strength (10% deformation) – 885 kg/cm²
- For tilting the envelope up to 90 degrees for directional lighting
- Can fit various pole sizes

POLE / BASE STAND :

- Dimension : 40 mm diameter & 1.1 meter height
- Material : Epoxy coated steel & aluminium for resistance of rust, corrosion & oxidation
- Adjustable height of up to 3.62 meters for wider lighting coverage
- Strong & wide expandable base of 1.2 meter for stability

ELECTRICAL DATA (230V) :

- Lamp type – Halogen tubular lamp with E40 cap, C-8 filament
- Lamp dimension: –
38 mm diameter X 280 mm length (1000W)
38 mm diameter X 295 mm length (2000W)
- Lamp power – 2 no's of 1000 watt / 1 no of 2000 watt
- Average Lamp lifespan – 2000 hours
- Lamp maximum temperature – 500 degrees Celsius
- Power supply protection – 10 amp fuse
- IEC standards: –
IEC 357 & BS 1075 for halogen lamp
IEC 61 & BS 51001 for lamp cap & holder
- Power cable – 3G1.5
- Generator set requirement – 2.4 kilowatt

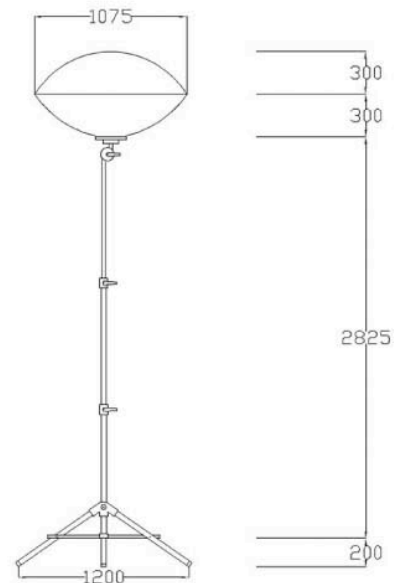


SETUP :

- Quick setup for emergency response (Max. of 2 minutes setup for 1 person)
- Balloon inflates in 45 seconds

TRANSPORT :

- Easy transport with equipment easily fitted in the boot space of a saloon car



BAG FOR STAND :

- Dimension : 1125mm length x 175mm width & 150mm height
- Material : Italiano leather sling on bag for easy carry
- Stand weight with bag is 5 kilogram

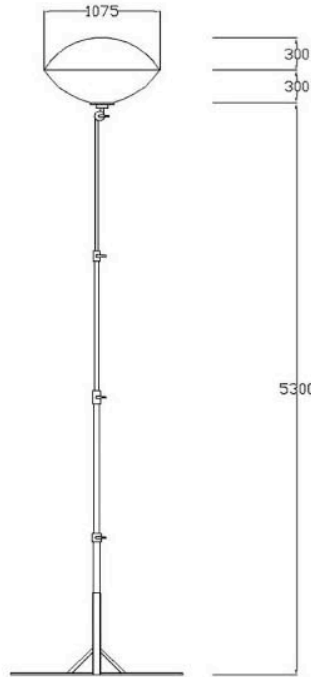
CONTAINER FOR LAMP :

- Dimension : 275mm diameter & 900mm height
- Material : Plastic container wrapped with Italiano leather & chrome steel handle for easy carry
- Balloon weight with container is 8 kilogram

LIGHTING DATA :

- Lighting coverage area at 3 meter height - 900 square meter
- Lighting area at 3 meter with minimum 10 lux – 300 square meter
- Lighting below 3 meter – 440 lux
- Efficiency – 21 lumens per watt
- Maximum lumens – 42000 lumens
- Temperature color – 3200 k

Mobile Lighting Tower 2000w HTI



CONTAINER FOR LAMP :

- Dimension : 275mm diameter & 900mm height
- Material : Plastic container wrapped with Italiano leather & chrome steel handle
- Balloon weight with container is 8 kilogram

CONTAINER FOR BALLAST :

- Dimension : 250mm length X 390mm width X 185mm height
- Material : High pressure die cast aluminium housing & chrome steel handle
- Ballast weight with container is 17 kilogram

BAG FOR STAND :

- Dimension : 1675mm length X 225mm width & 200mm height
- Material : Italiano leather sling on bag for easy carry
- Stand weight with bag is 10 kilogram

BALLOON :

- Dimension : 1075mm diameter & 600mm height
- Material : Rip-stop nylon with polyurethane coating
- Non flammable & UV-resistant envelope material
- Elliptical shape offers strong wind resistance of up 100 km per hour / 62.5 miles per hour
- Built in high heat resistance reflector for optimal light output
- Inflated by a blower with internal pressure of 3 mbar / 300 pa
- Built in pressure sensor to withstand strong falls or impact
- Continuous circulating air maintains envelope inflated and keep the lamps cool
- Auto power cut off switch to prevent eye damage if internal pressure is reduced

TILTING HEAD DEVICE :

- Dimension : 100mm diameter & 110mm width
- Material : POM-C
- ASTM Test : Hardness (Rockwell) – R116
- ASTM Test (D256) : Impact Strength (Izod notched) – 6.1kg/cm²
- ASTM Test (D638) : Tensile strength – 685 kg/cm², Elongation (At yield) – 40%, Tensile modulus – 31900 kg/cm²,
- ASTM Test (D648) : Deflection temperature (18.5kg/cm²) – 106 degrees celisius
- ASTM Test (D695) : Compressive strength (10% deformation) – 885 kg/cm²
- For tilting the envelope up to 90 degrees for directional lighting
- Can fit various pole sizes

POLE / BASE STAND :

- Dimension : 65 mm diameter & 1.6 meters height
- Material : Stainless steel for resistance of rust, corrosion & oxidation
- Adjustable height of up to 5.9 meters for wider lighting coverage
- Strong & wide expandable base of 1.59 meters for stability

SETUP :

- Quick setup for emergency response (Maximum of 3 minutes setup for 1 person)
- Balloon inflates in 45 seconds

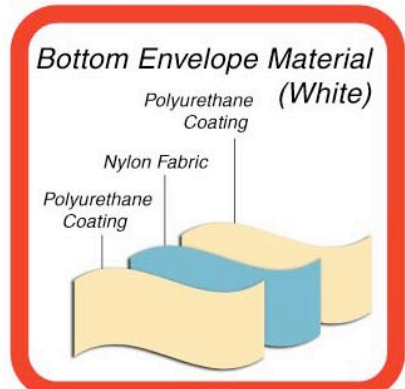
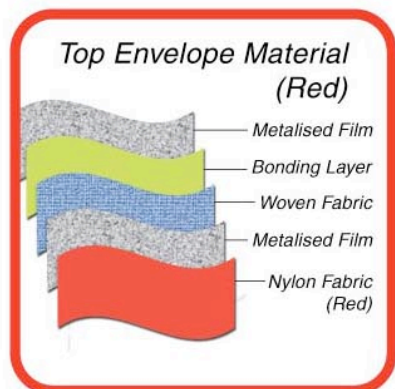
ELECTRICAL DATA (230V) :

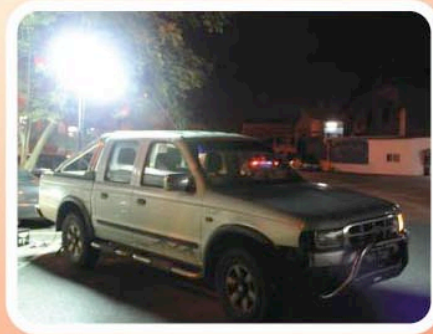
- Lamp type – Metal halide tubular lamp with E40 cap
- Lamp dimension: –
80mm diameter X 340mm length (1000W)
101mm diameter X 430mm length (2000W)
- Lamp power – 2 no's of 1000 watt / 1 no of 2000 watt
- Average Lamp lifespan – 8000 hours
- Lamp maximum temperature – 400 degrees Celsius
- Power supply protection – 10 amp fuse
- IEC standards requirement: –
IEC 922 & IEC 923 for ballast
IEC 926 & IEC 927 for ignitors
- Power cable – 3G1.5

LIGHTING DATA :

- Lighting coverage area at 6 meter height – 4665 square meter
- Lighting area at minimum 10 lux – 1380 square meter
- Lighting below 6 meter height – 550 lux
- Efficiency – 80 lumens per watt
- Maximum lumens – 160000 lumens
- Temperature color – 6000 k
- Run-up time – 4 minutes
- Restrike time – 7 minutes
- Ignitor voltage – 4 to 5 kv
- PFC capacitor – 60 uF

Accessories & Features





SKYMOLITE Lighting Tower solutions are versatile, convenient, ideal for outdoor lighting and safety. Can be used for construction, disaster relief, drilling, agriculture, landscaping, mining, paving, road works, maintenance, night parking, search & rescue, etc.

If you have a project that requires lighting to enhance a particular site, or to light an area, our lighting professionals can assist you with your needs. Our experienced crew understands the large variety of our product lines and can help you find the best solution for all of your lighting needs.

